



Driving innovation for an ever changing world

TM2 – Surface Texture Meter



**The viable
alternative
to the
traditional
sand patch
method**

*

**Calculates
and
displays
SMTD and
MPD**

Pavement texture is an extremely important road surface property, influencing skid resistance, rolling resistance and tyre noise.

The TM2 surface texture meter is the result of an extensive in-house research and development programme by W.D.M. Limited to provide all the functionality of a routine texture measurement instrument, coupled with extensive analysis tools.

When validating vehicular texture, the TM2 delivers the definitive reference

measurement. It measures the road profile transversely over a width of 100mm to build a detailed record of the surface, with its average texture depth, giving repeatable and reproducible results.

The TM2 is powered by a rechargeable lithium battery and projects a very thin continuous laser line onto the road surface, transversely to the direction of travel.

This procedure creates a broad swathe of road profile which is repeated every 1 - 5mm, producing a 3D representation

of the surface. Any changes in walking speed do not impair the accuracy of the measurement.

The width of 100mm has been chosen to provide the MPD statistical length (as determined in ISO 13473) and to maintain the low profile of the device.

The device is easy to operate and delivers repeatable and reproducible results. The TM2 has been further updated to include GPS tracking technology, for greater survey detail and accurate mapping.

W.D.M. Limited, North View, Staple Hill, Bristol BS16 4NX

T: +44(0) 117 956 7233 E: info@wdm.co.uk W: www.wdm.co.uk

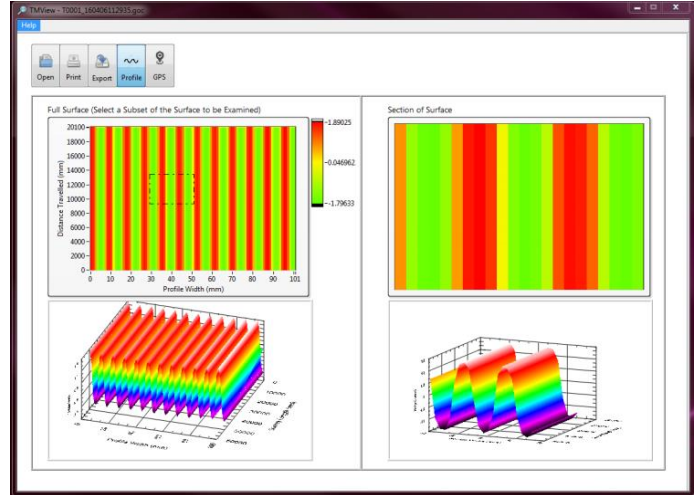
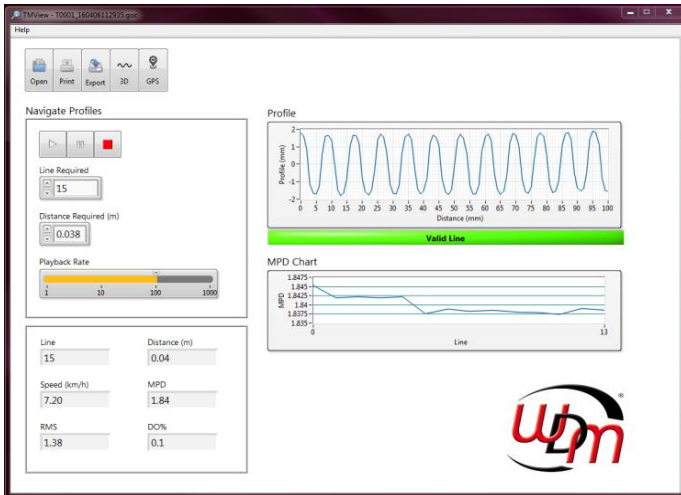
Data Storage

Survey data is stored internally, on the tablet PC, and on to external USB pen drives. 1km of standard texture and GPS data, providing 10 and 50m results will require only 65KB of data storage. If 'raw' data is selected, 1km of test data will require up to 400MB of data storage.

Survey Detail

The operator can optionally choose to store standard texture data files or all the raw data, which can then be analysed by using the standalone TM View software, an optional post-processing software-set, that allows you to review and analyse your surveys, line-by-line. It also includes a GPS feature for mapping the route taken on the survey.

Thanks to distance triggered surveying, the TMView program can also be used to provide a 3D representation of the surveyed area:



Computer

The TM2 utilises a 7" fanless, daylight viewable widescreen XGA Touch Panel PC. The system runs the familiar Windows operating system, and has a resistive touch screen, which may be operated by either finger or stylus. The tablet includes a generous 32GB hard-drive. The panel PC itself is attached by a one-click operation and is fully manoeuvrable. Data can be transferred from the TM2 to a removable USB pen drive with ease



TM2 Specifications

Laser line sampling frequency

Laser line sampling length

Profile depth measurement range

Profile depth measurement resolution

Walking speed range

Survey distance with external USB flash disk

Batteries – lithium ion rechargeable

Battery operating time

(Battery also replaceable with simple docking system)

ISO Compatibility

Weight

User Selectable
(1mm – 5mm regularity)
100mm
50mm
<0.05mm
1-5kph
>10km
36v
Up to 10 hours

ISO 13473 in three parts
22 kg

Product patent nos.: Australia – 2009202347 / UK – GB2460892, / USA – 8,159,679 / Hong Kong – 1139200.

Austrroads has validated TM2 as a calibrated reference device for measuring pavement surface texture (AG:AM/T014 – Reference Device Method)