

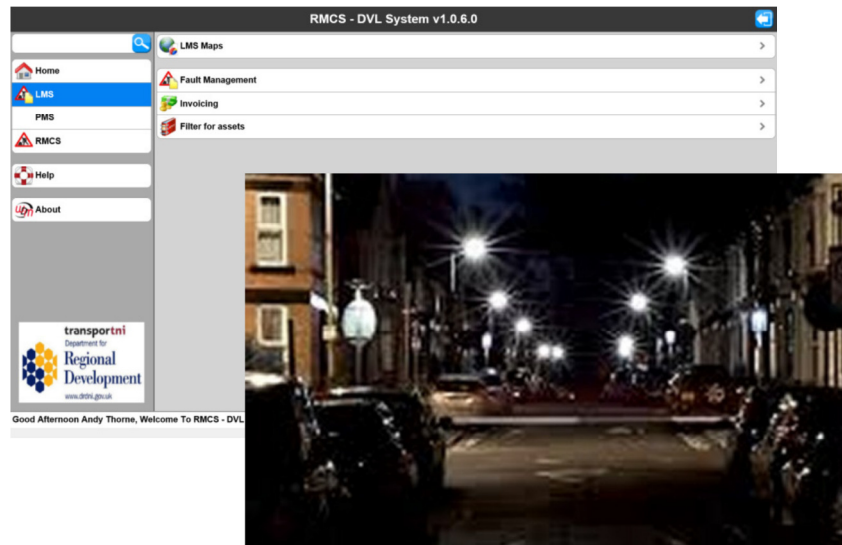


Driving innovation for an ever changing world.

## Lighting Management System Night Time Scouting

As an integrated part of the WDM<sup>®</sup> Lighting Management System (LMS) solution, the proactive approach of Night Time Scouting has been designed to provide a flexible suite of tools allowing an end-operative to determine the condition of individual illuminated assets by following a predetermined route.

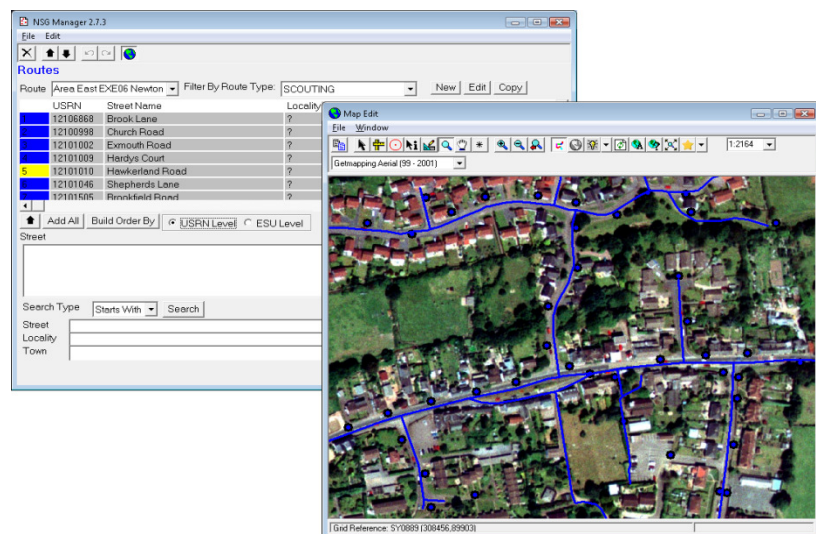
The WDM<sup>®</sup> tools provide appropriate integration with the latest map based techniques including export to industry standard GIS formats for use in MapInfo and ArcView.



Administrators of the system can comprehensively manage user and user group privileges allowing individuals to fulfil their role within the process.

Custom tools allow the creation and management of scouting routes which can be built using National Street Gazetteer (NSG) data, or some other operational road network data. Assets can be associated to a route by street, part street, using polygon areas or other available asset attributes. Routes can be later refined by organising, editing and restructuring as required.

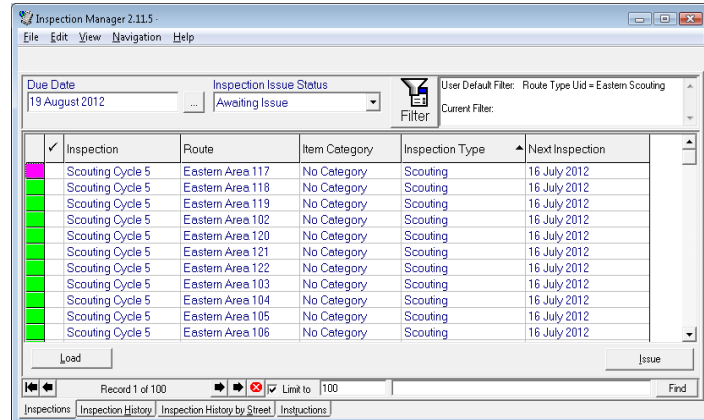
Manage the scheduling of your scouting routes to keep track of what is due for issue, or issued and awaiting return, using the Inspection Manager. Criteria can be specified to dynamically include or exclude assets upon issue and inspections can be issued in advance if required. Provide scouting instructions in paper or electronic formats.





Driving innovation for an ever changing world.

Collect scouted outages and any other faults, such as intermittent flashing or red light, remotely using VICII on handheld devices making use of GPS if available. Record details such as the inspection operative and on site weather conditions. Automatically or manually sign the visit date and time to positively identify working assets.



The actual GPS route can be recorded for internal auditing if required. Large Fonts, Simple Pick Lists and Pop Up keyboards controlled by the software are all designed to aid the Operative.

Both Scouting and Routine Maintenance are GPS enabled, making map based data collection quick and easy. The identified faults can then be returned manually, or remotely to improve efficiency and reduce travel requirements.

Once the faults are returned to the main system they can be manually or automatically issued to the contractor for repair. Build up a full history of night time scouting inspection against the route, street and asset allowing standard reports for insurance queries. Generate Performance Indicator reports for the monitoring, analysis and audit of night time scouting. Monitor actual inspection dates against the planned or required inspection date, length of return times, view the actual route undertaken as recorded by the handheld GPS, percentage of faults identified, etc.

